

HIV SENTINEL SURVEILLANCE AT ANC SITES

Eligibility criteria for inclusion of ANC attendees in HSS

Inclusion Criteria

- Age 15-49 years
- Pregnant woman attending the antenatal clinic for the **first time during the current round of surveillance.**

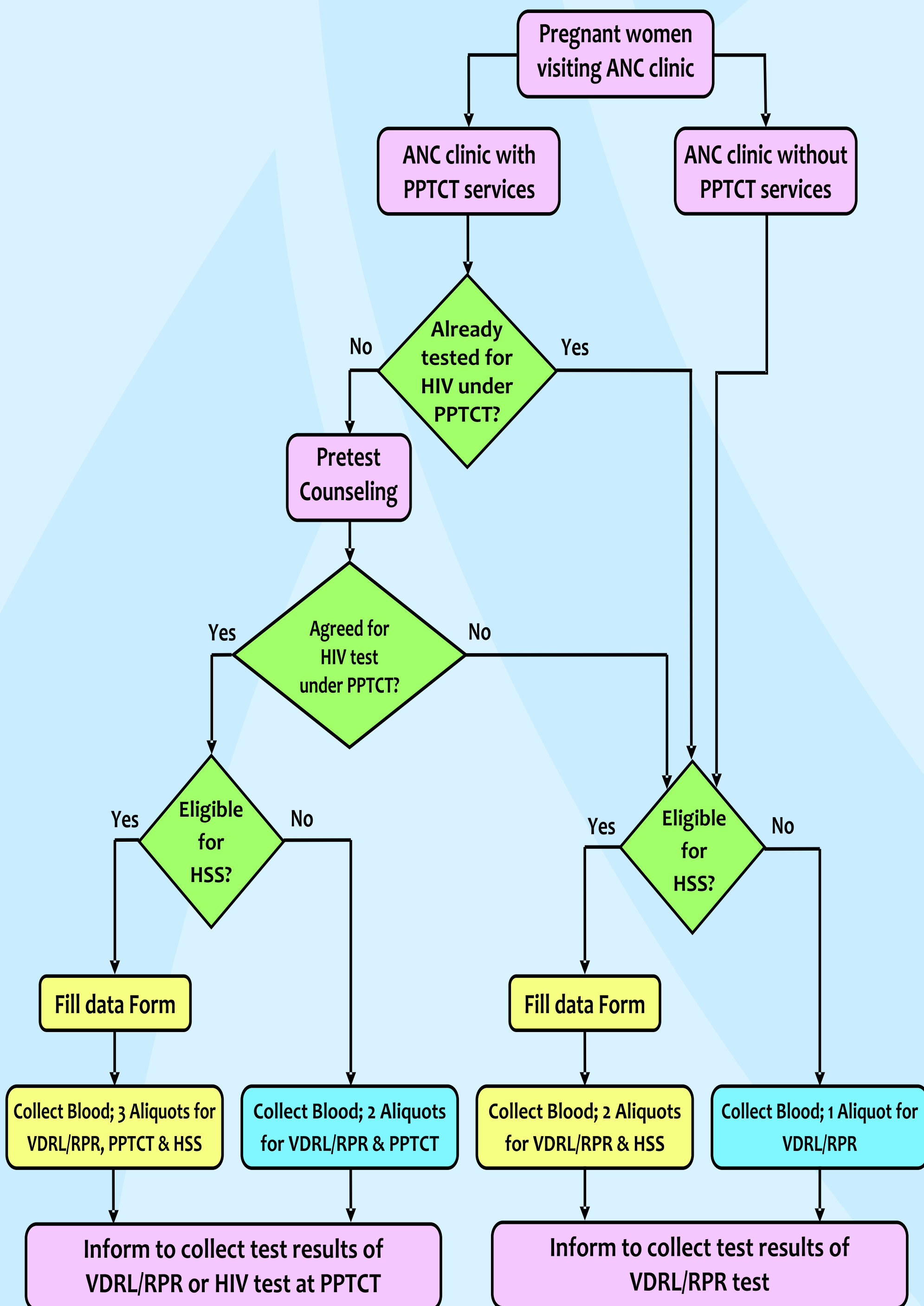
Note

- If a pregnant woman becomes eligible by the above criteria, she should be included irrespective of date of antenatal registration, having been tested under PPTCT or not, known HIV status and participation in previous rounds of surveillance.

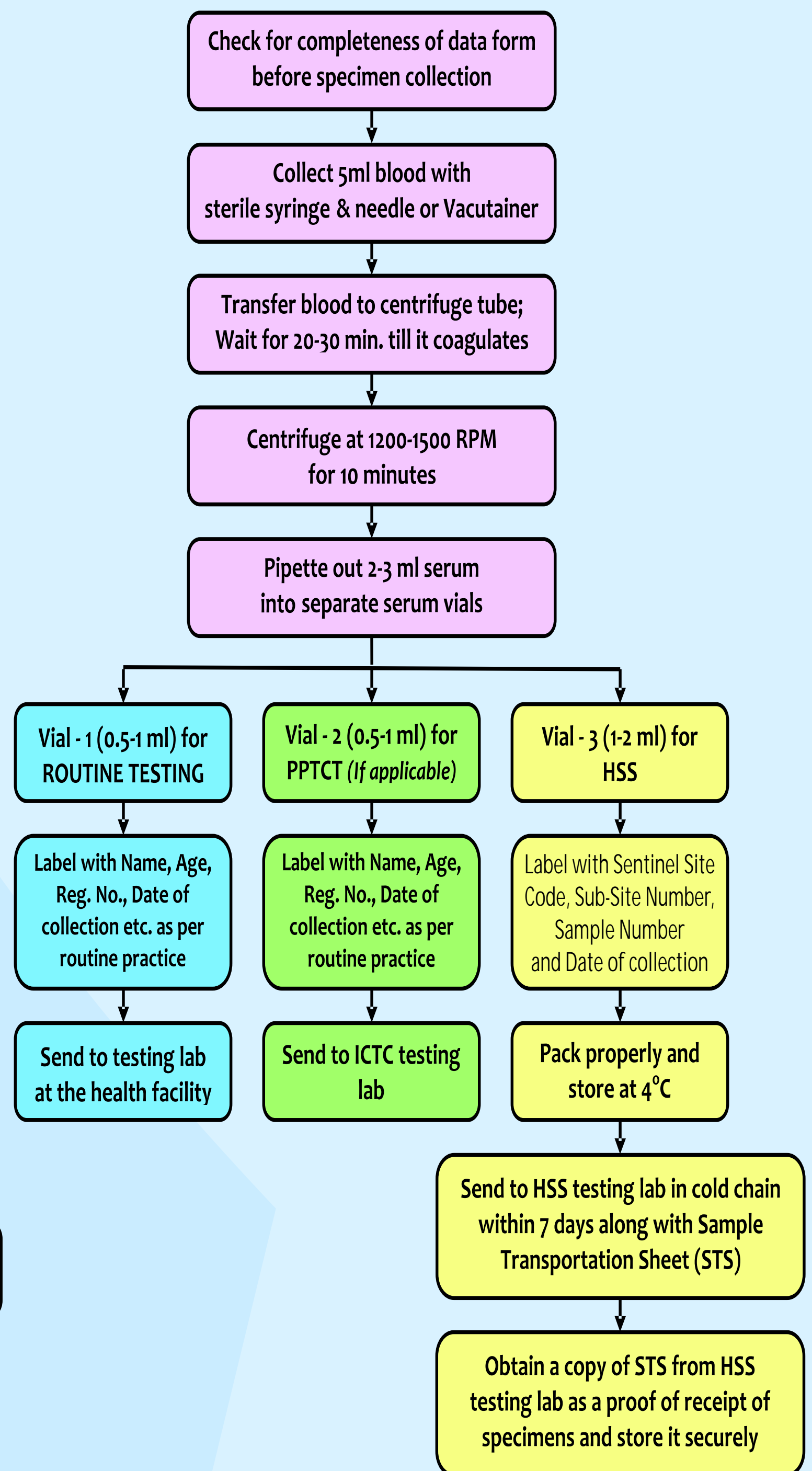
Documentation to be Maintained

S.No.	Document	Managed by	Verified by	Norms for submission
1	Data Form	Nurse / Counselor	Site In-charge	Send to Regional Institute EVERY WEEK along with Data Form Transportation Sheet
2	Data Form Transportation Sheet	Nurse / Counselor	Site In-charge	Send to Regional Institute EVERY WEEK along with data forms in duplicate
3	Sample Transportation Sheet (STS)	Lab Technician	Site In-charge	Send to HSS Testing Lab EVERY WEEK along with serum specimens in duplicate
4	Supervisory Visit Register	Nurse / Counselor	Site In-charge	Send to SACS at the end of HSS

Recruitment Process



Blood Specimen Management



Important Instructions

- ✓ Strictly follow the inclusion criteria for selection of eligible individuals.
- ✓ Ensure consecutiveness in recruiting individuals into HSS; assessment for eligibility should be done in the order they attend the clinic.
- ✗ Do not mention any personal identifiers on the data form and blood specimens to maintain Unlinked Anonymous Testing.
- ✓ Ensure that, for an individual, the site code, sub-site number and sample number written on the data form and blood specimen are the same.
- ✓ Follow standard operating procedures for collection and processing of blood specimens.
- ✓ Store the sera samples at +4°C for not more than 7 days and send them to the HSS testing lab every week along with two copies of sample transportation sheet.

HIV SENTINEL SURVEILLANCE AT STD SITES

Eligibility criteria for inclusion of STD patients in HSS

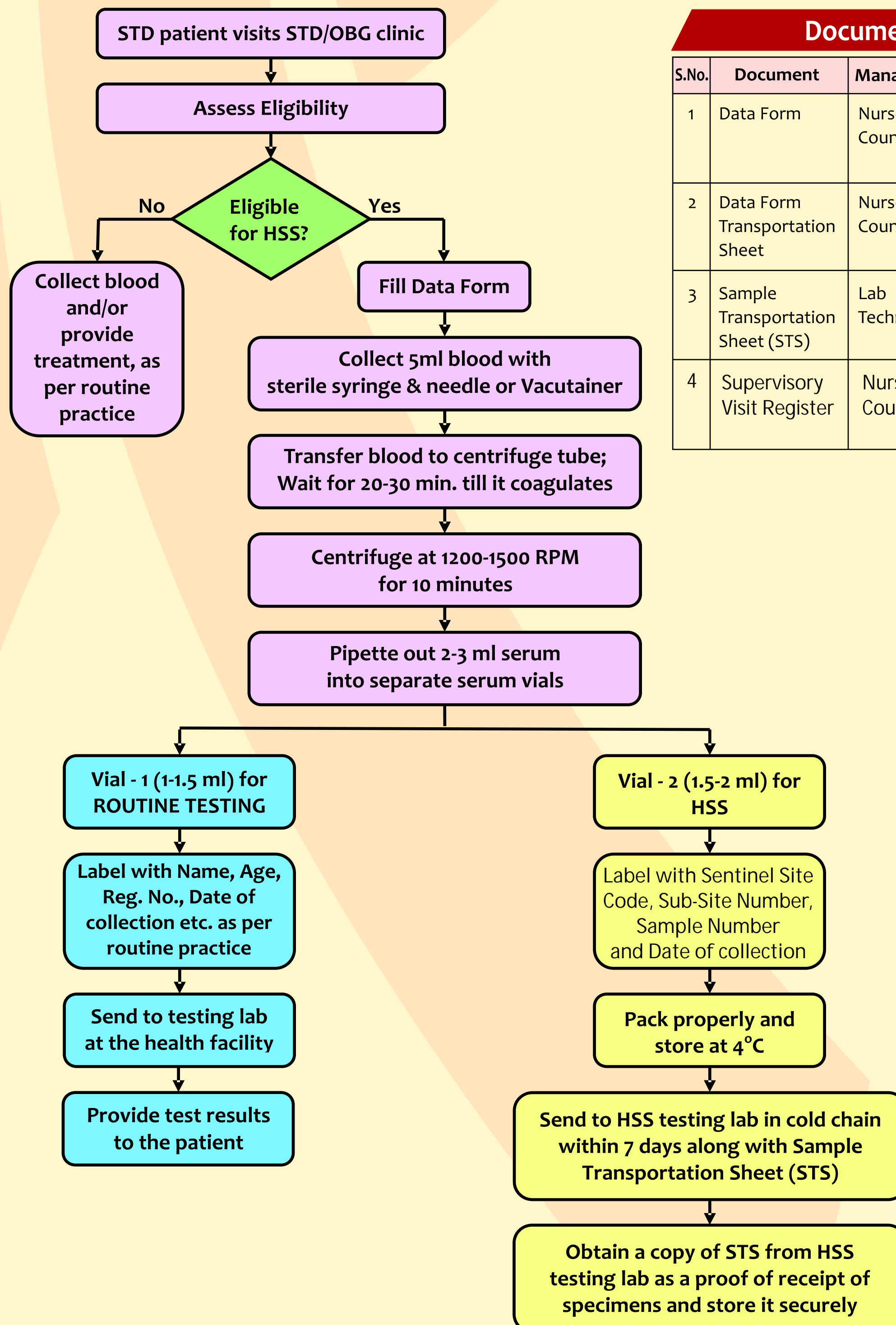
Inclusion Criteria

- Man or woman, in the age group 15-49 years
- Diagnosed with any of the following STD syndromes during current visit
 - Urethral discharge in males
 - Cervical discharge in females (on confirmation by per-speculum examination)
 - Ano-genital warts
 - Ano-genital ulcer
- Attending the STD/OBG clinic for the first time during the current round of surveillance

Important points to note while assessing eligibility

- In men, milking of urethra should be performed to determine the presence of urethral discharge, if necessary.
- In women, visualization of the cervix by per-speculum examination is necessary to determine the presence of cervical discharge and to clearly differentiate it from vaginal discharge, which is not a STD. If cervical discharge is not confirmed, the woman is not eligible for HSS.
- Patients who have been already diagnosed and prescribed treatment for their STD before the start of HSS, but are visiting the clinic for the first time during the round of surveillance are eligible for inclusion.
- Participation in a previous round of surveillance and HIV positivity status are not reasons for exclusion from the current round of HSS.

Recruitment Process & Blood Specimen Management



Documentation to be Maintained

S.No.	Document	Managed by	Verified by	Norms for submission
1	Data Form	Nurse / Counselor	Site In-charge	Send to Regional Institute EVERY WEEK along with Data Form Transportation Sheet
2	Data Form Transportation Sheet	Nurse / Counselor	Site In-charge	Send to Regional Institute EVERY WEEK along with data forms in duplicate
3	Sample Transportation Sheet (STS)	Lab Technician	Site In-charge	Send to HSS Testing Lab EVERY WEEK along with serum specimens in duplicate
4	Supervisory Visit Register	Nurse / Counselor	Site In-charge	Send to SACS at the end of HSS

Important Instructions

- ✓ Strictly follow the inclusion criteria for selection of eligible individuals.
- ✓ Ensure consecutiveness in recruiting individuals into HSS; assessment for eligibility should be done in the order they attend the clinic.
- ✗ Do not mention any personal identifiers on the data form and blood specimens to maintain Unlinked Anonymous Testing.
- ✓ Ensure that, for an individual, the site code, sub-site number and sample number written on the data form and blood specimen are the same.
- ✓ Follow standard operating procedures for collection and processing of blood specimens.
- ✓ Store the sera samples at +4°C for not more than 7 days and send them to the HSS testing lab every week along with two copies of sample transportation sheet.